



7 SERIES

ENGINE POWERED FORKLIFT

7FG/7FD

1.0 to 3.5 ton



<http://www.keiyou.net>

ERGONOMICS

&



It's a new standard!

Were you ever convinced that work efficiency and safety aren't compatible?

Must noise and exhaust emission be tolerated?

Are you truly satisfied with your current forklift?

Toyota 7 Series rewrites conventional stereotypes with excellent work efficiency and safety supported by both vehicular and load handling control technologies to deliver superior engine performance, maintain smooth forklift works and provide a clean work environment.

Our mission is to seek for customer satisfaction.

The Toyota 7 Series is our answer to a future standard that innovates the workplace.

ECOLOGY

<http://www.keiyou.net>

Value Standard 1.

Excellent Safety!

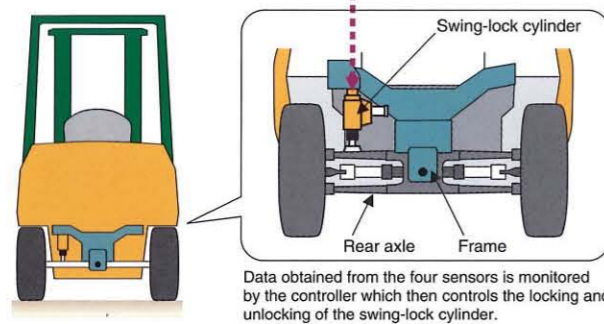
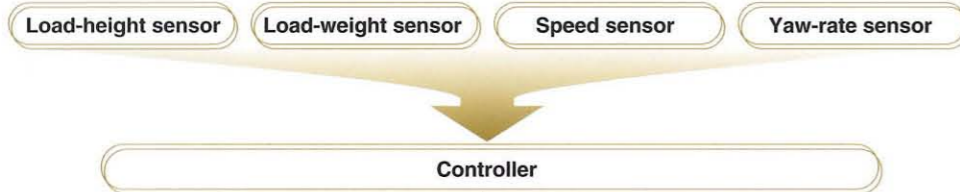
Innovative SAS Electronic Controlled Technology Paves a New Road.

Though the basic requirements for excellent mobile speed, load handling and safety seem to contradict each other, these are no longer merely a dream with Toyota's System of Active Stability (SAS) electronic control technology that provides excellent computer-controlled work quality in your workplace from mobility to load handling.

World's first Active Control Rear Stabilizer

SAS

Forklifts tend to be unstable while turning, this is why the Active Control Rear Stabilizer is so important, because it actively controls vehicle stability by monitoring the forklift, and also interrupts rear axle swing for balanced floor contact. As a result, both excellent turning features and stability is maintained during speedy works while the risk of forklift angling is reduced.



World's first Active Mast Function Controller

SAS

●Active Mast Front Tilt Angle Control

This system computer-controls the active mast front tilt angle according to the height and weight of the load lifted or carried to reduce the danger of dropping the load or falling-over of the vehicle during careless operations.

●Active Mast Rear Tilt Speed Control

The mast reverse speed is computer-controlled according to the height of the fork to reduce the risk of load-shifting. Since the speed is slow during high-lifting and swift for low lifting, operator-friendly, comfortable and speedy load handling performance are maintained at all times.



World's first Key-Lift Interlock

SAS

The hydraulic pressure Key-Lift Interlock is designed to keep the fork stationary when the engine is turned off. *1

World's first Leak-less Valve System

SAS

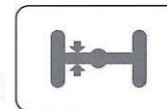
The Leak-less Valve System reduces hydraulic pressure leakage that may result in the fork sliding down and cause the mast to tilt forward. *1

*1. ALWAYS fully lower fork and turn OFF engine when forklift is unattended.
●SAS availability and specifications are determined regionally and are subject to change without notice. Please consult your authorized Toyota dealer for details.

■SAS Operation Monitor

Both warning light and alarm are activated to warn the operator that SAS is not operating.

Swing-lock indication light (SAS model only)



Value Standard 2.

Myriad Functions and Safety Features

Excellent safety features, for an excellent work environment.

Double-Action Parking Brakes

Double-Action Parking Brakes comes in handy.



Vehicle Speed Control System (VSCS) (OPT)

Optionally combining VSCS with SAS ensures optimal travel speed according to the workplace while maintaining speedy load handling.



ORS Seat

A seat must be comfortable to sit on, and contribute to protect the operator from danger. These musts are satisfied with the left-and-right winged seat and seatbelts.



Clear-View Mast

Operator visibility is a must for safety and productivity. Thanks to the Clear-View Mast design featuring a wide mast opening the operator commands good view of the fork tips, while seated. A view like this not only realizes a high level of safety, but reduces operator fatigue and encourages higher productivity.

Seamless Roof Construction

The operator is protected from falling objects, and shielded from rain with this high-rigidity, rust-proof, large seamless roof.

High-Mounted Rear Combination Lights (OPT)

High-mounted lights not only ensure good visibility, but also to prevent them from accidental damage.



ERGONOMICS

<http://www.keiyou.net>

Value Standard 3.

Ideal Working Conditions

Operating like your hands and legs from the very first time.

A forklift strives to satisfy advanced demands of an expert operator, as well as remain operator-friendly for a new operator, from the very first time. The fully refined silent engine and power train, ergonomically designed driver's seat and perfect operational ease are some of the superior features that come with the 7 Series.



World's first SAS Active Steering Synchronizer

SAS

FHPS actualizes 100% stationary steering in small workplaces. This steering system yielding superior turnability is a product of Toyota's original SAS Active Steering Synchronizer that maximizes on-demand operator motive force. Reduced incidents of malfunction and easy maintenance are other superior characteristics possible with the structure designed with minimal mechanical links.



World's first

SAS

Electric Shift Control

To freely control the powerful 7 Series with light and good response the 7 Series comes with an electric shift control.



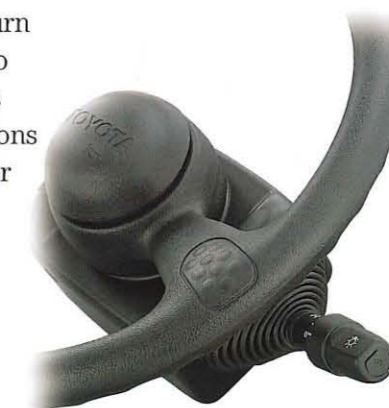
SAS Automatic Fork Leveling Control

Depressing the switch on the top of the tilt lever when moving the mast from a rear to a front tilt automatically positions the fork horizontally for easier fork insertion and extraction resulting in smoother pallet handling.



Integrated Light & Turn Signal Switch

An Integrated Light & Turn Signal Switch common to passenger vehicles means light and blinker operations are at the tip of the finger while seated.



Triple Synchromesh Manual Transmission

Smooth gear shifting and better durability for forward/reverse synchronization is a product of this triple cone 3-synchronizer ring (outer, middle and inner) system.

ERGONOMICS

<http://www.keiyou.net>

Value Standard 4.

Superior Environment-Friendly Features

The theme is to remain friendly to the environment, people and workplace.

Exhaust emission and noise are basic issues that future forklifts confront. This is why the Toyota 7 Series refined the engine, brushed-up the induction and exhaust systems, and honed the transmission mechanism and mounting style to ensure unprecedentedly clean exhaust emission, low-noise, low vibration and energy-saving performance.

We make a big deal about defining new environmental performance standards of industrial vehicles in the 21st century.

DPF-II (OPT)

The Diesel Particulate Filter (DPF) exhaust system on the Toyota Forklift has the capability to reduce 'black smoke' from diesel emissions by 100%. The new optional DPF-II system consolidates this emission reduction and dramatically improves the physical and chemical properties of the filter materials, diminishing start-up delay and lengthening filter life.



1DZ-II Diesel Engine

1DZ-II fully refines its preceding 1DZ developed for industrial purposes, to deliver dynamic power and energy-saving performance, while reducing diesel smoke to virtually invisible levels even at maximum rpm.



5K Gasoline Engine

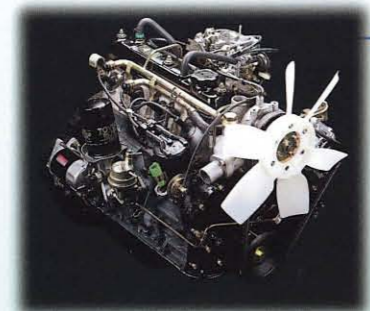
Though compact, the Toyota 5K engine prides in more-than-enough power and excellent fuel efficiency to drive industrial vehicles, while promising low noise, low exhaust emission to a commendable level.



Engine

2Z Diesel Engine

More-than-enough power and user-friendliness are the qualities of this top-class powerful 3.5 liter diesel engine with superior reliability, while reducing black diesel exhaust smoke to the levels of 1DZ-II.

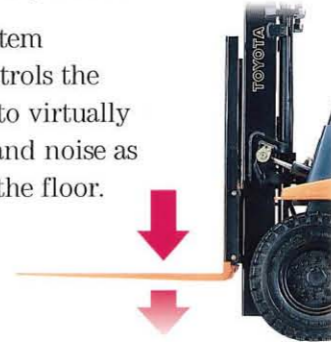


4Y Gasoline Engine

Efficient dependable power is the hallmark of the 4Y engine that not only delivers low fuel consumption and low exhaust emissions, but quieter operation noise with the silent-chain system.

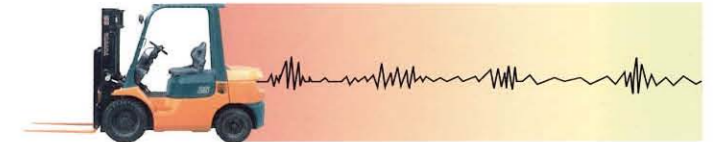
Easy-Down System

The hydraulic system automatically controls the speed of the fork to virtually eliminate jolting and noise as the forks contact the floor.



Quiet Operation Noise

To further eliminate undesirable vibration and noise, the 7 Series feature an advanced full-floating power train, as well as optional sound-dampening measures to maintain vibration-free and quiet working conditions.



<http://www.keiyou.net>

MAIN SPECIFICATIONS

Model		7FG10 7FD10	7FG15 7FD15	7FG18* 7FD18*	7FG20 7FD20	7FG25 7FD25	7FG30 7FD30	7FG35 7FD35
engine Model		5K 1DZ-II	5K, 4Y 1DZ-II	4Y 1DZ-II	5K,4Y 1DZ-II, 2Z	5K,4Y 1DZ-II, 2Z	4Y 1DZ-II, 2Z	4Y 2Z
Load Capacity	kg	1000	1500	1750	2000	2500	3000	3500
Load Center	mm	500	500	500	500	500	500	500
Overall Width	A mm	1045	1070	1070	1150	1150	1240	1290
Turning Radius(outside)	B mm	1880	1960	1980	2170	2240	2400	2500
Overhead Guard Height	C mm	2030	2030	2030	2060	2060	2120	2130
Length to Fork Face	D mm	2210	2245	2275	2545	2600	2745	2815

NOTE : *Powershift transmission model only.

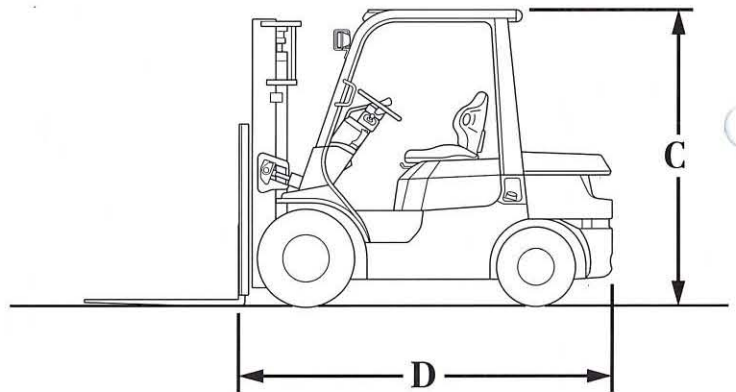
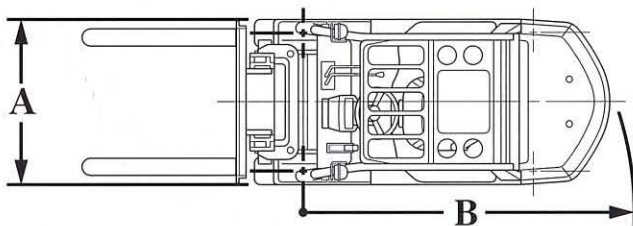
ENGINE SPECIFICATIONS

Model		Toyota 5K Gasoline	Toyota 4Y Gasoline
Piston Displacement	cc	1486	2237
Rated Hosepower/r.p.m.	kW	28/2800	40(43)/2400(2600)
Rated Torque/r.p.m.	N-m	112/2000	161/1800

NOTE : () for 7FG30/7FGJ35.

Model		Toyota 1DZ-II Diesel	Toyota 2Z Diesel
Piston Displacement	cc	2486	3469
Rated Hosepower/r.p.m.	kw	40[44]/2400[2600]	49/2200
Rated Torque/r.p.m.	N-m	166/1600	215/1600

NOTE : [] for 60-7FD20,25,30/62-7FD20,25,30.



Availability and specifications are determined regionally and are subject to change without notice. Please consult your Toyota representative for details.

Printed on recycled paper.

TOYOTA
INDUSTRIAL EQUIPMENT

TOYOTA MOTOR CORPORATION

<http://www.keiyou.net>

7FG, 7FD10-35/E-1800 ©/Printed in Japan/No.710840E0/8,300